



## *Lot 321 Jindabyne Street Andrews Farm (Lakeside Estate)*

Located in Andrews Farm, this is an outstanding investment opportunity, to own one of South Australia's best display homes.

**Price:** \$390,000  
**Lease:** 2 years plus 3 x 1 year options  
**Rental:** 7% of purchase price (\$27,300 per annum based on \$390,000)  
**Furniture:** Furniture included at no charge  
**Land area:** 370sqm (approx)

Set and forget: Statesman Homes is responsible for garden maintenance, gas, electricity and water usage as well as all maintenance during the lease (refer to lease for details)

This innovative home cleverly features 2 living areas as well as three bedrooms with robe provision, including a master with ensuite and walk-in-robe, a functional three-way bathroom and spacious open-plan family and meals area. The "chef-friendly" kitchen provides plenty of cupboard and bench space and the central living area enjoys the advantage of natural light from both sides of the home - great for meeting unexpected guests.

*Don't delay - this opportunity won't last!*

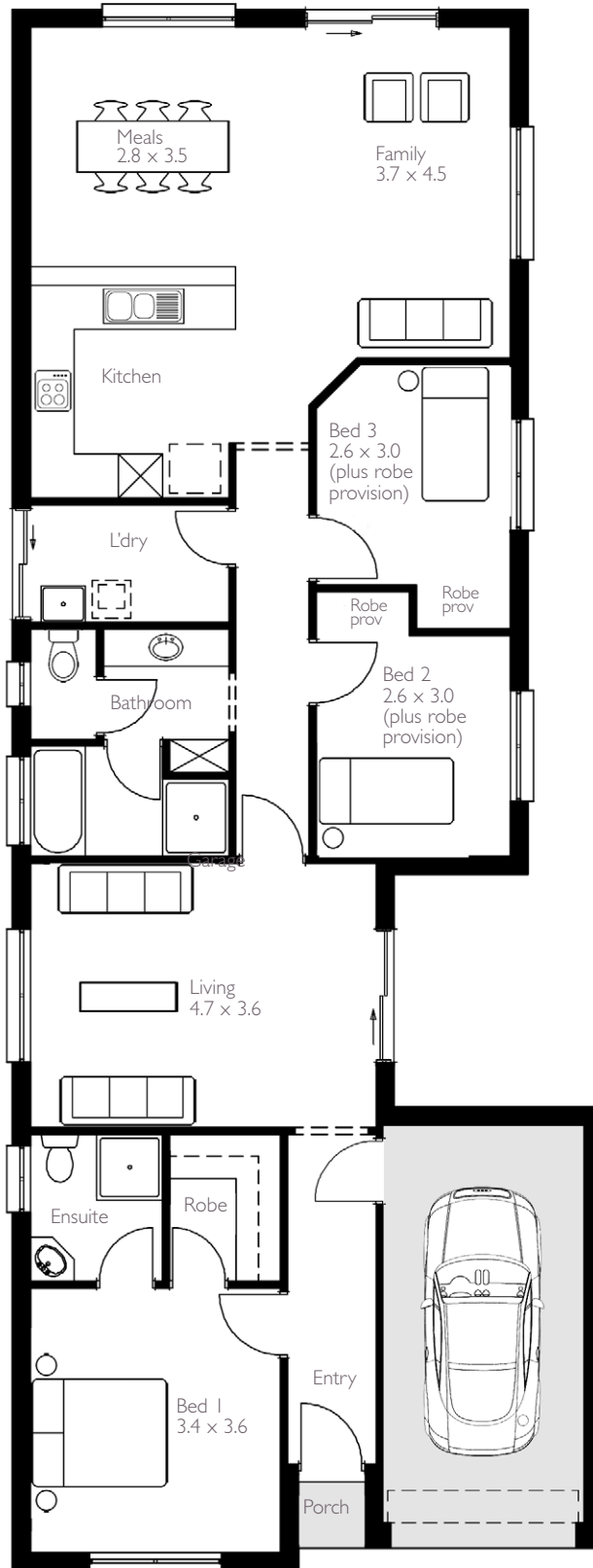


# brooklyn

Living Area: 129.08 sqm  
 Porch: 0.82 sqm  
 Garage: 18.00 sqm  
 Total: 147.90 sqm (15.88 squares)  
 Width: 8.00m (inc. single garage)  
 Depth: 21.23m

This intelligent home has been specifically designed to make the most of a narrow block.

**15.88  
Squares**



- VILLA
- 2 bathrooms
- 3 bedrooms
- 1 car garage
- 2 living

Note: there may be slight differences between the floorplan shown above and the actual home

